

Report of the Executive Director

CHANGES TO WARD BOUNDARIES1. Purpose of Report

To ask the Committee to note the changes to borough ward boundaries which have been approved by the Local Government Boundary Commission for England.

2. Recommendation

The Committee is asked to NOTE the changes to the borough ward boundaries detailed in the appendix.

3. Detail

Following the Community Governance Review (CGR) completed earlier in the year, a request was made to the Local Government Boundary Commission for England for related alterations to be made to the seven borough wards where these are no longer coterminous with parish boundaries. Details of the wards affected are given in the appendix. The new boundaries will come into effect for the elections in May 2023.

4. Financial Implications

There are no financial implications arising from this report.

5. Legal Implications

The Council has a responsibility under the Local Government and Public Involvement in Health Act 2007 to ensure that local governance continues to be effective and convenient and that it reflects the identities and interests of local communities.

6. Human Resources Implications

There are no Human Resources implications.

7. Union Comments

There are no comments from the Union.

8. Data Protection Compliance Implications

There are no data protection implications.

9. Equality Impact Assessment

The proposed polling places are accessible for everyone.

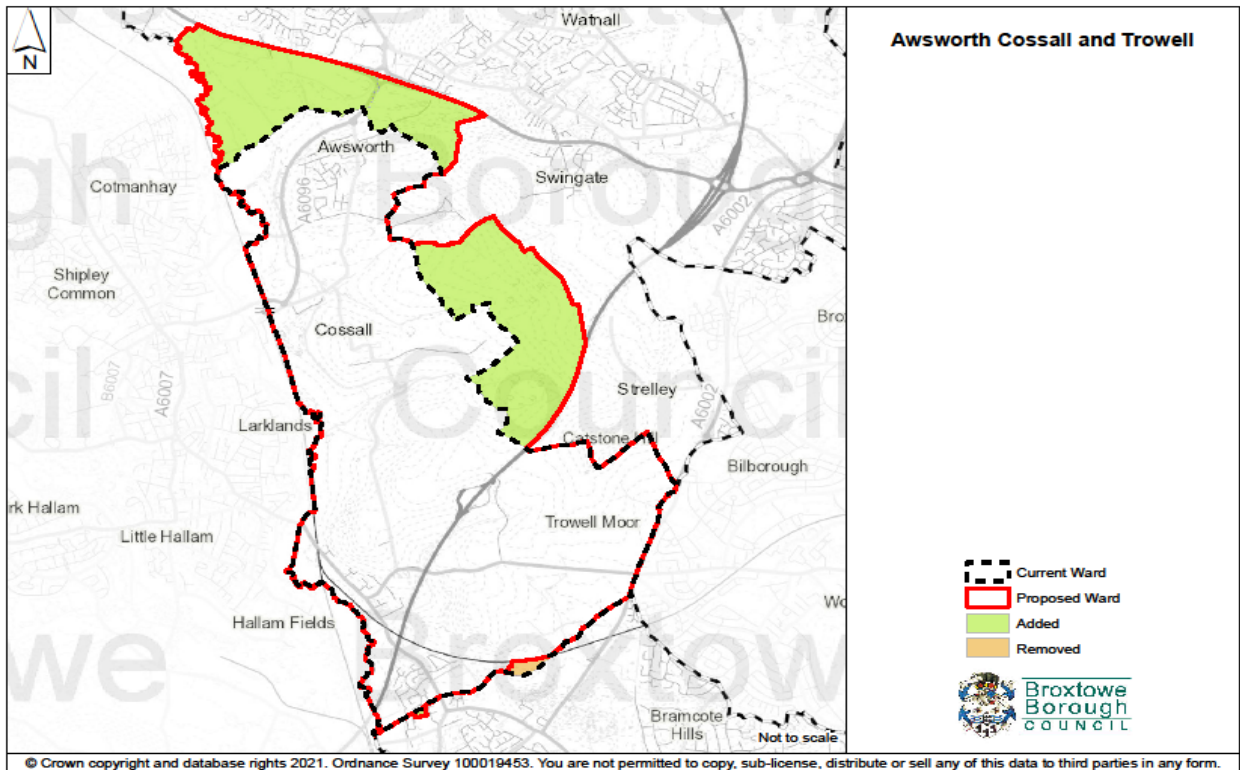
10. Background Papers

None.

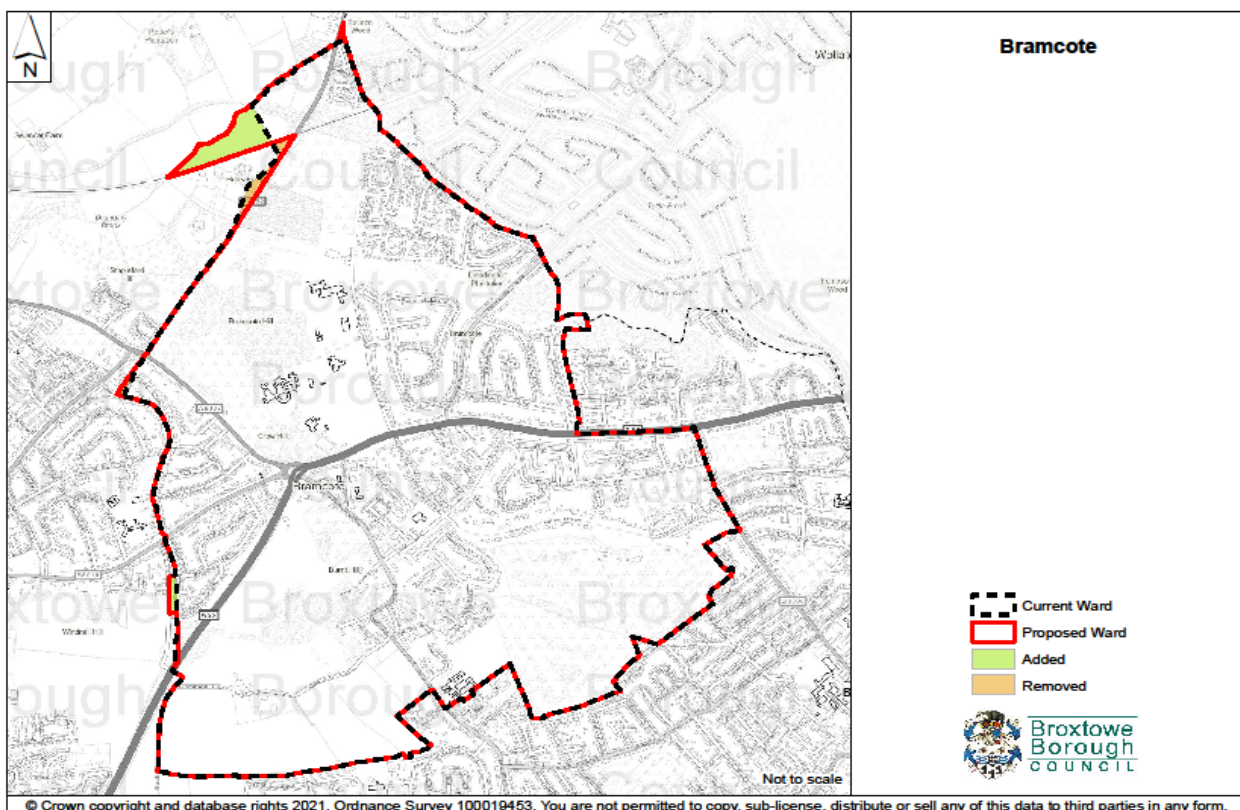
APPENDIX

Changes to Borough Wards

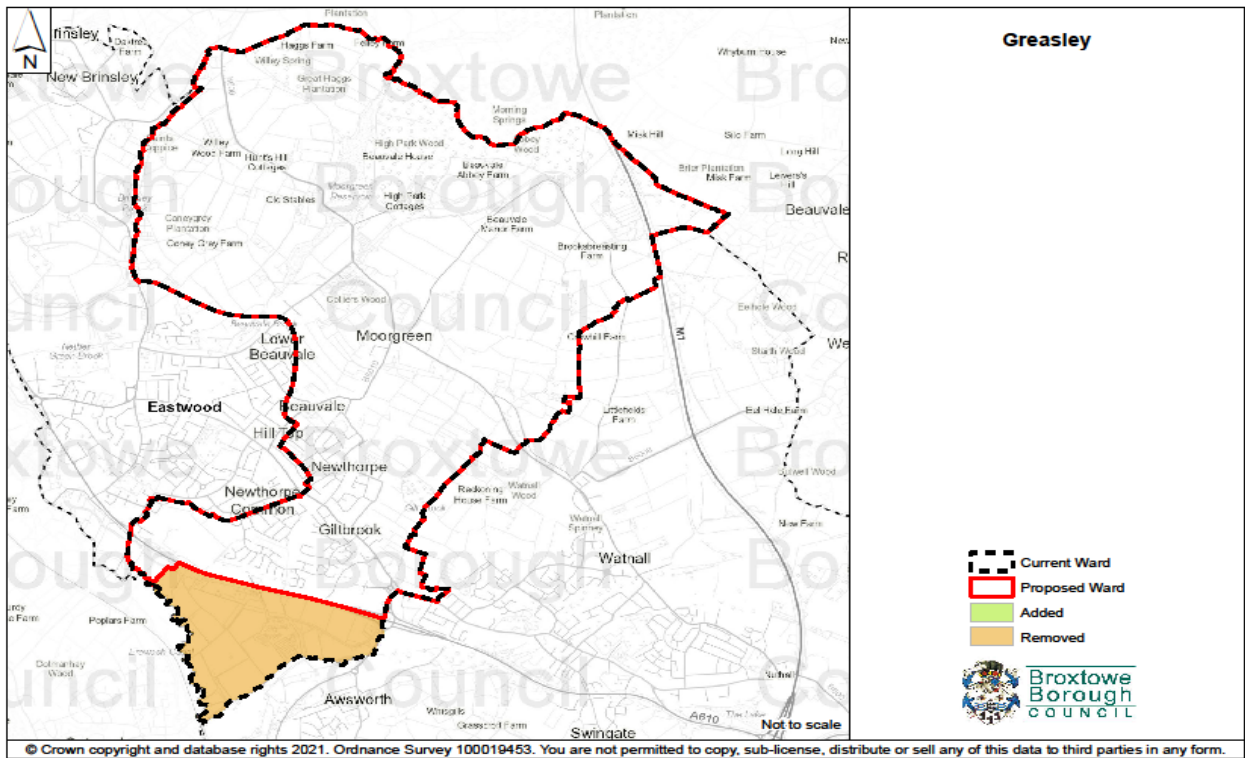
1. Awsorth, Cossall and Trowell



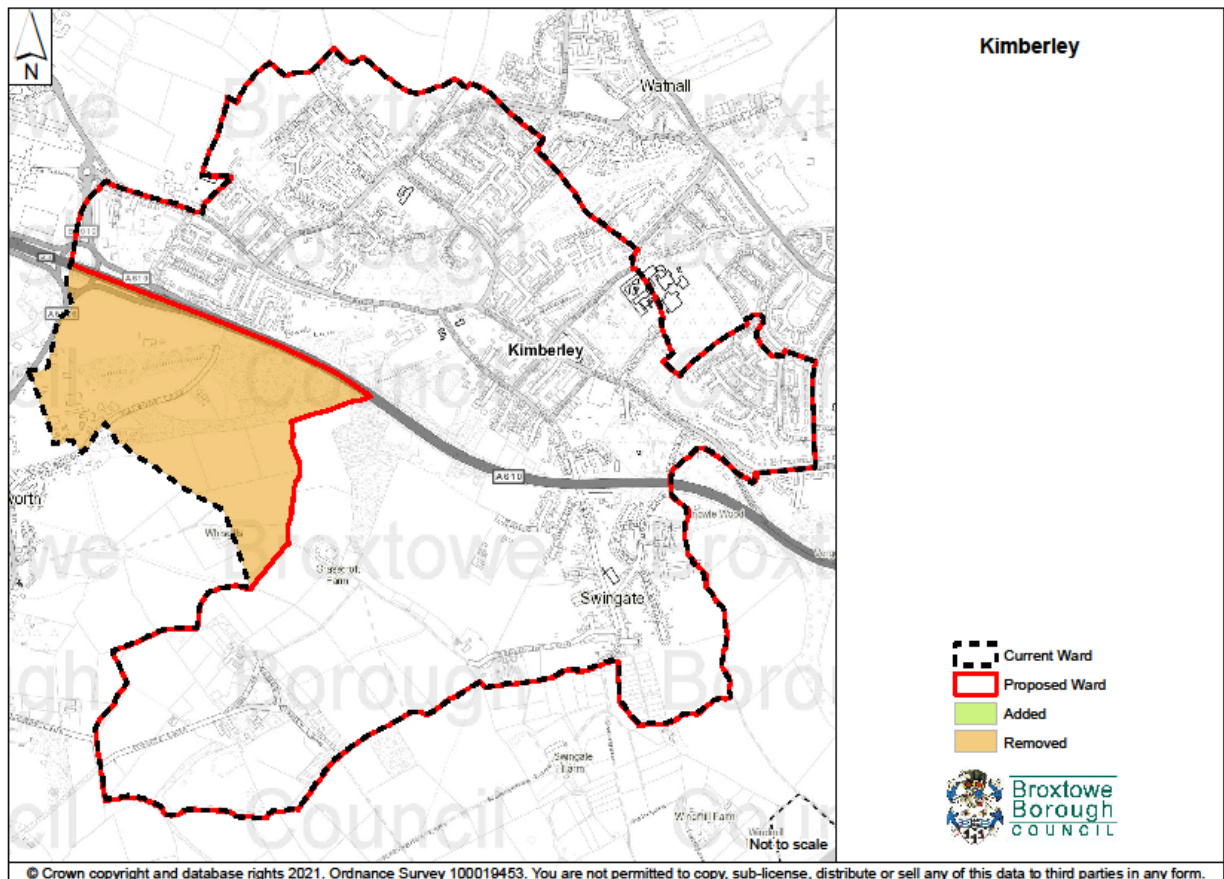
2. Bramcote



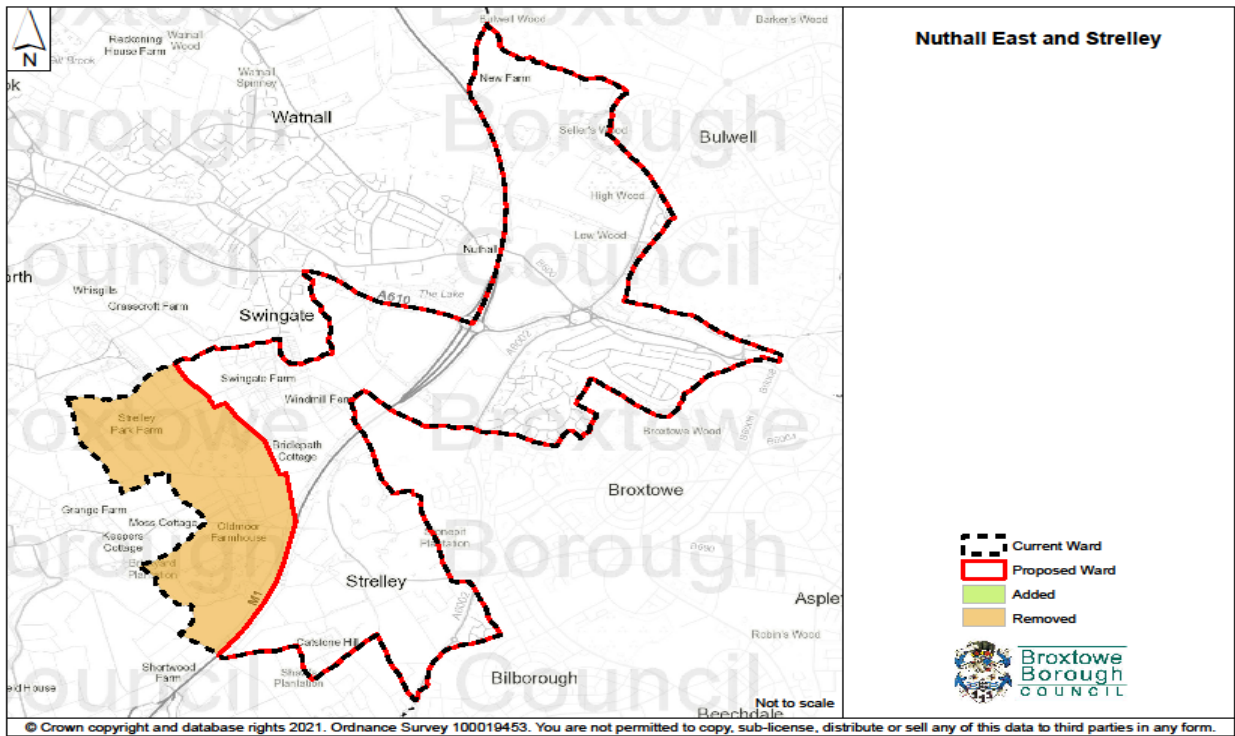
3. Greasley



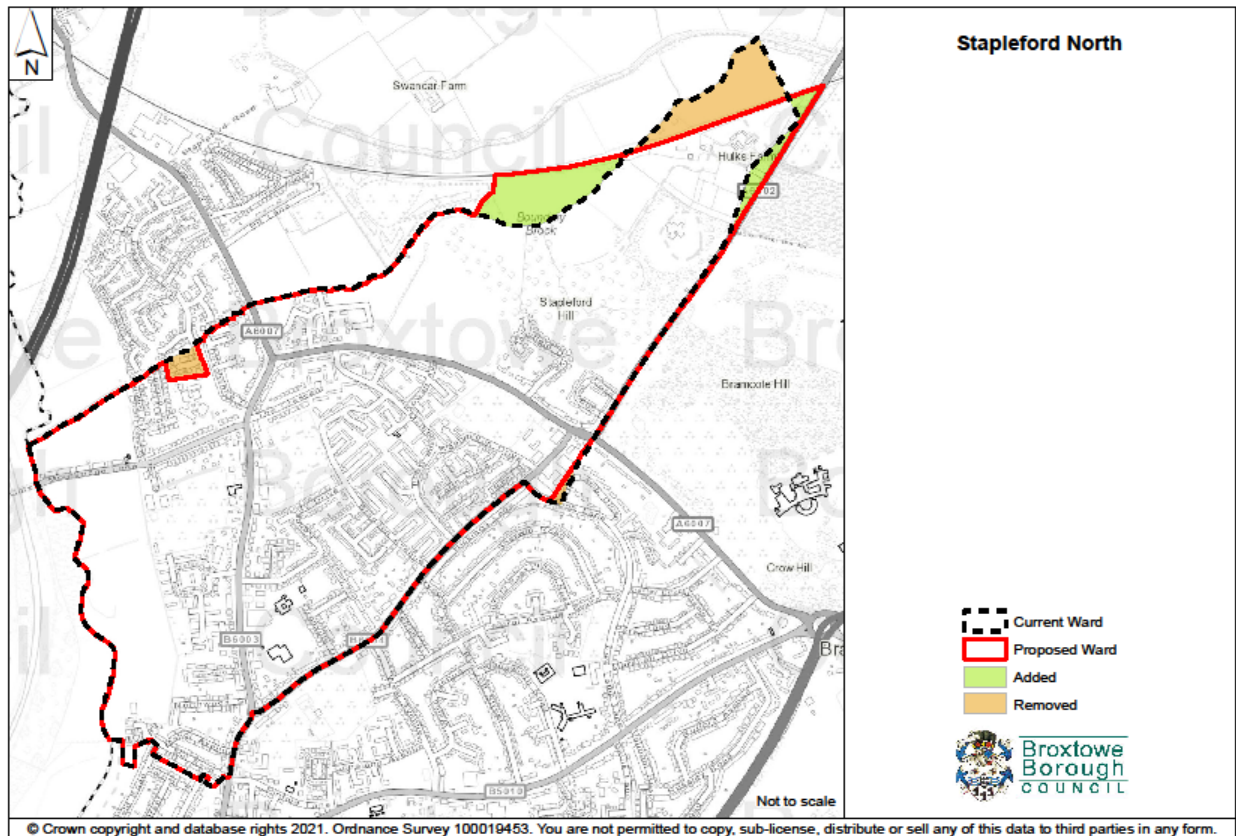
4. Kimberley



5. Nuthall East & Strelley



6. Stapleford North



7. Stapleford South East

